



# NCD *status* guide

*for*

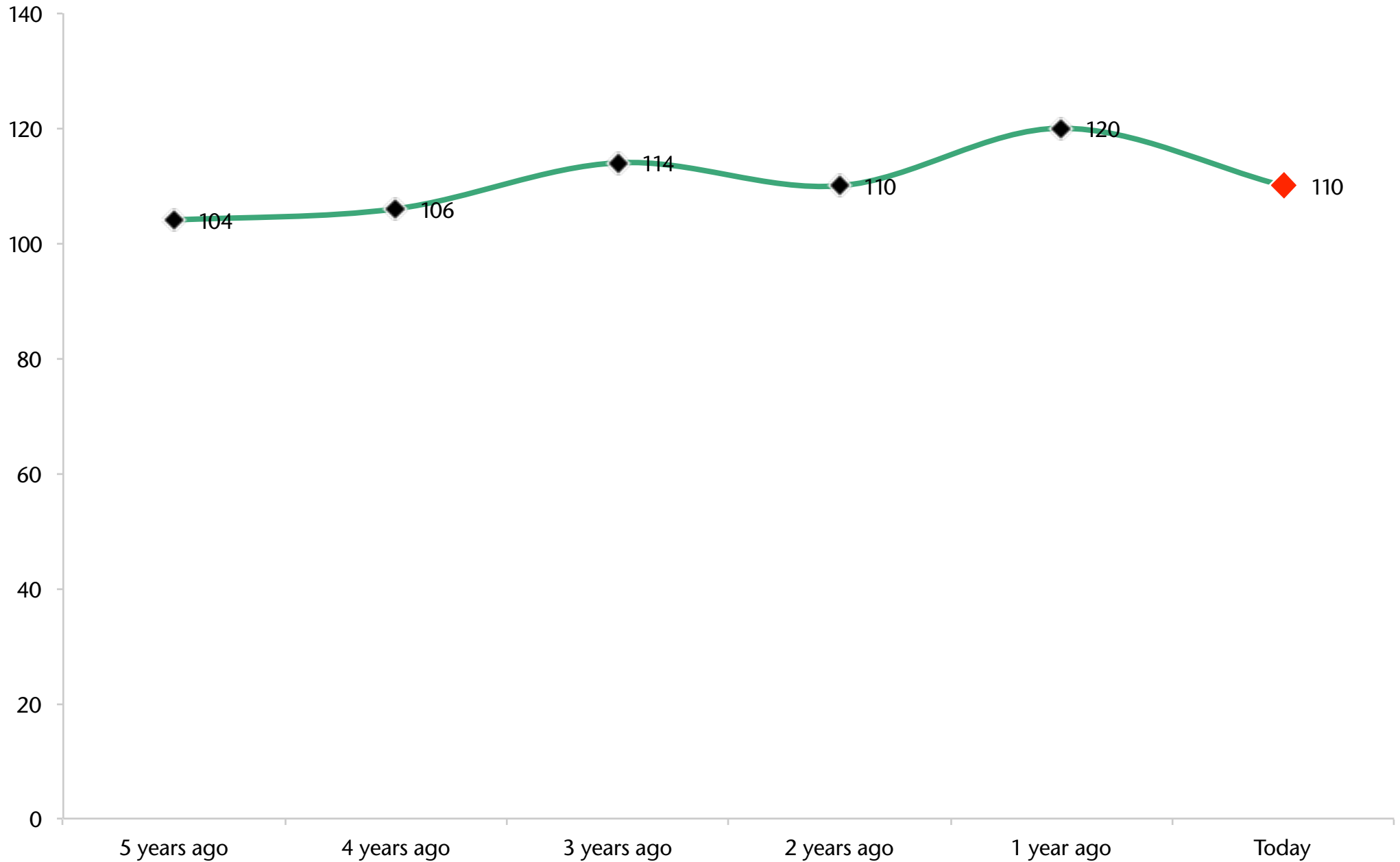
## WL0501 Leamington Priors St Mary - 10.30am

**March-2017**

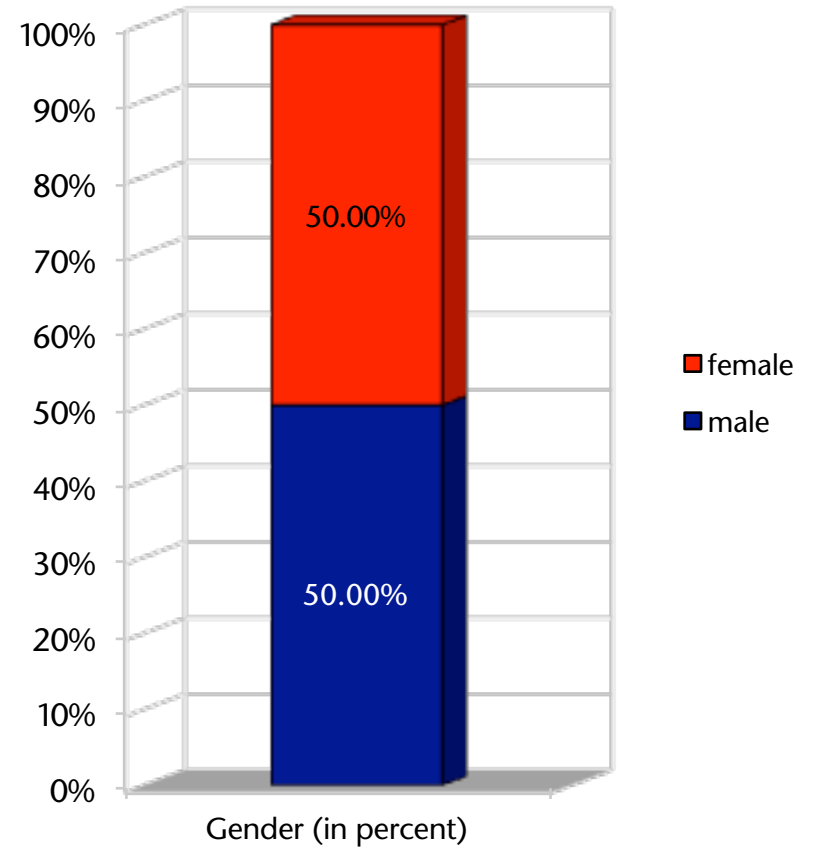
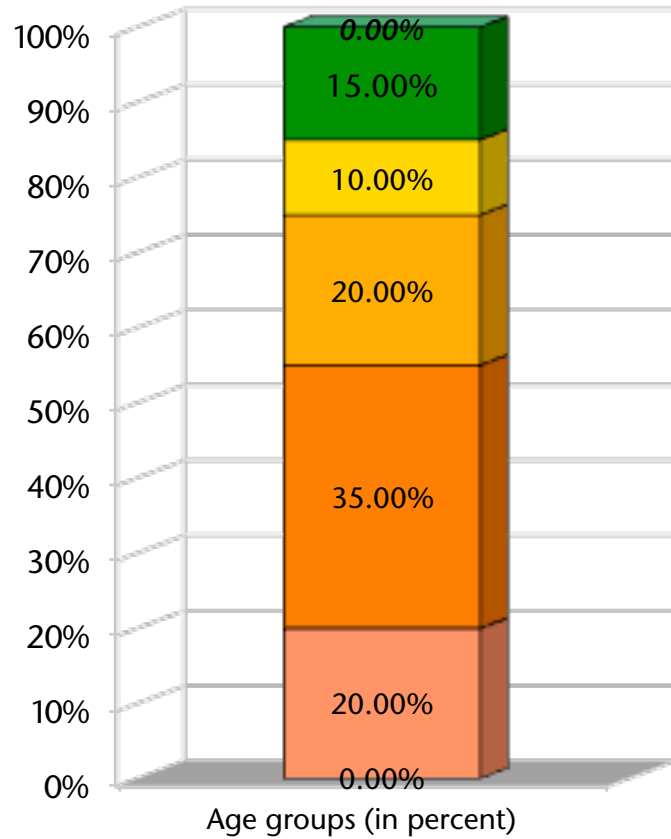
**Pastor for 5 years:** Chris Knight

Profile	Date	Minimum Factor	Maximum Factor	Min - Max Difference	Average
3	Mar-17	54.9 Inspiring worship service	72.0 Loving relationships	17.1	64.3
				Change 2 - 3	+0.3
2	Jul-15	59.0 Effective structures	70.0 Loving relationships	11.0	64.0
				Change 2 - 2	+3.8
2	Nov-13	53.0 Passionate spirituality	69.6 Holistic small groups	16.6	60.2

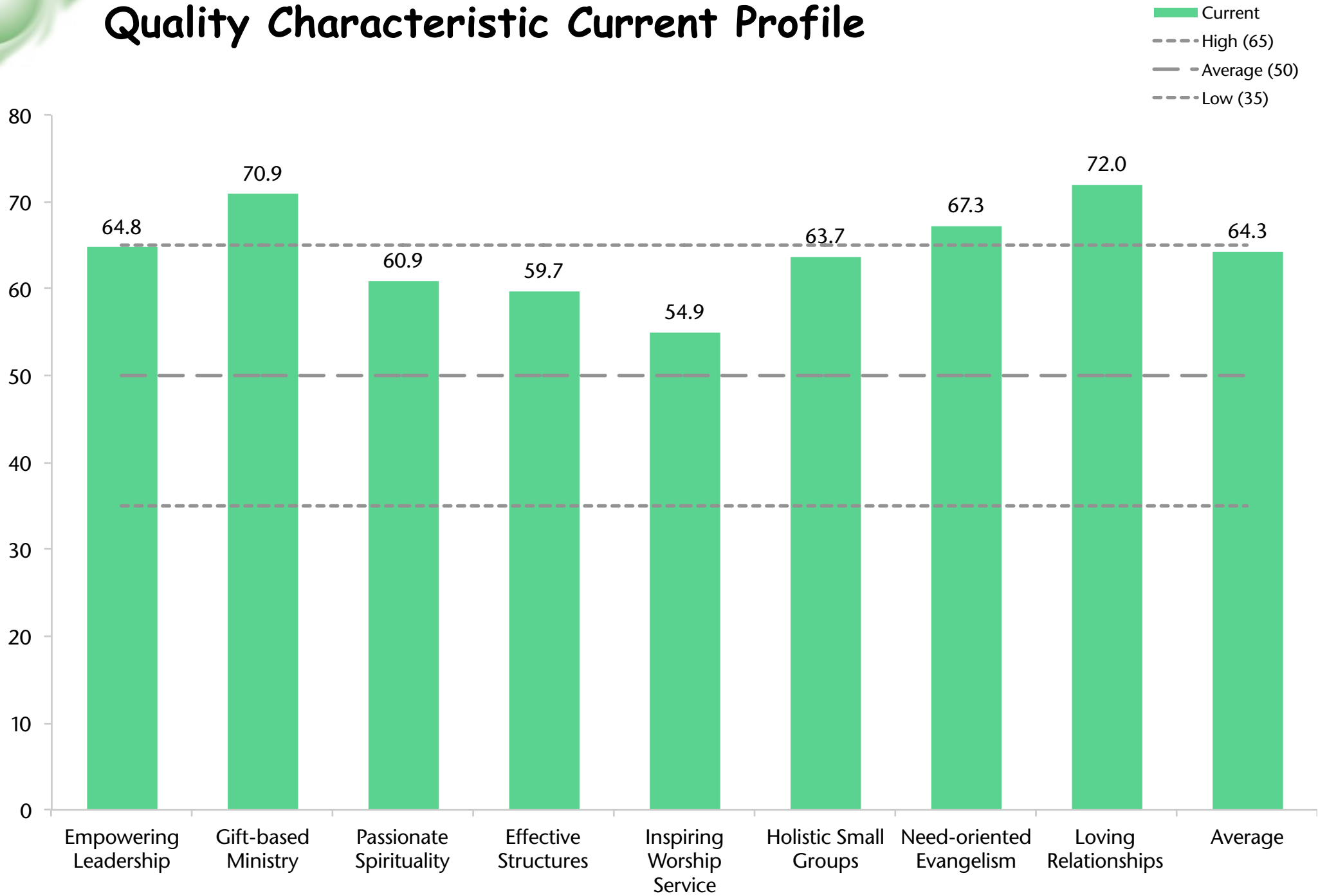
# Adult Attendance Growth



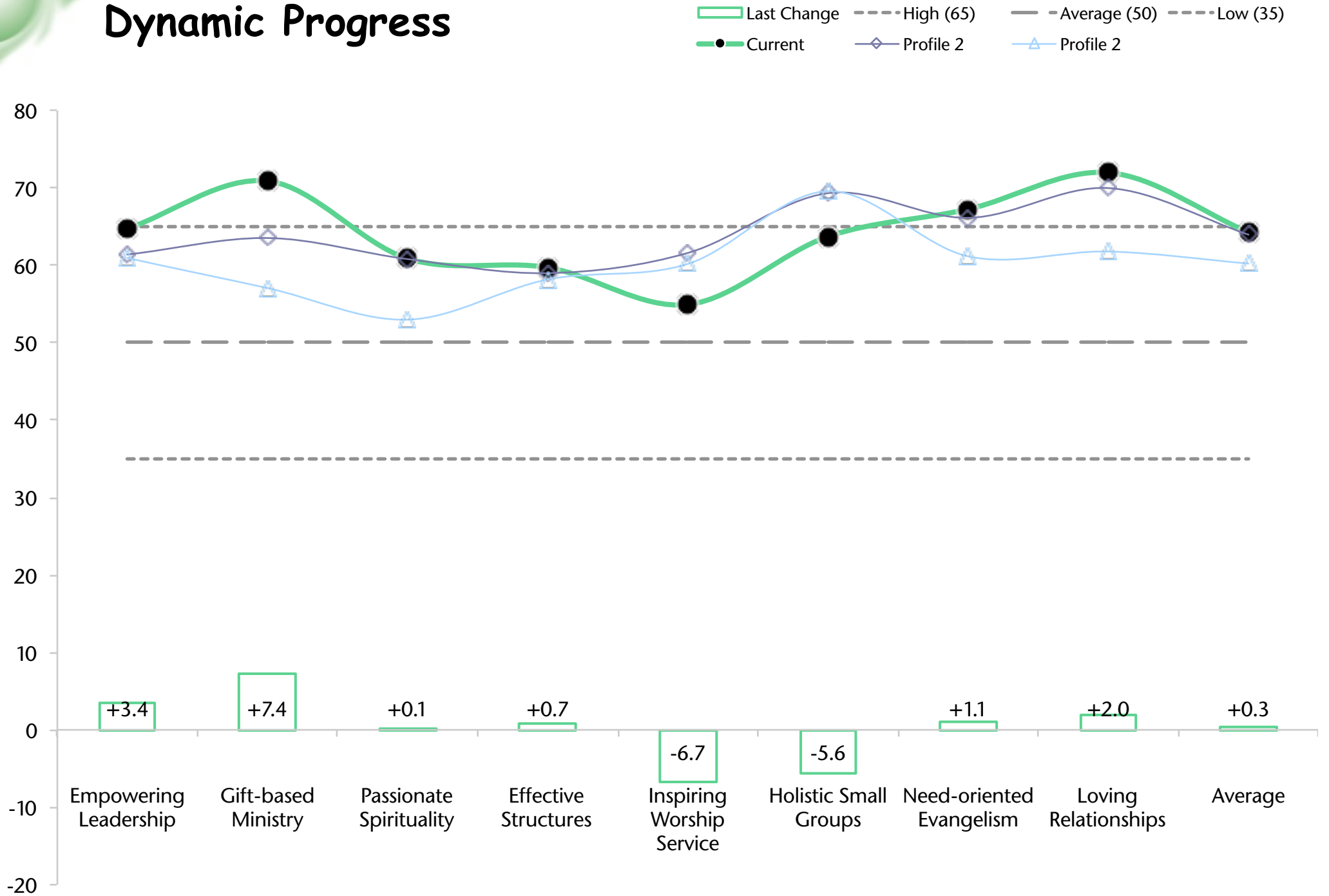
# Survey Participants by Age Groups and Gender



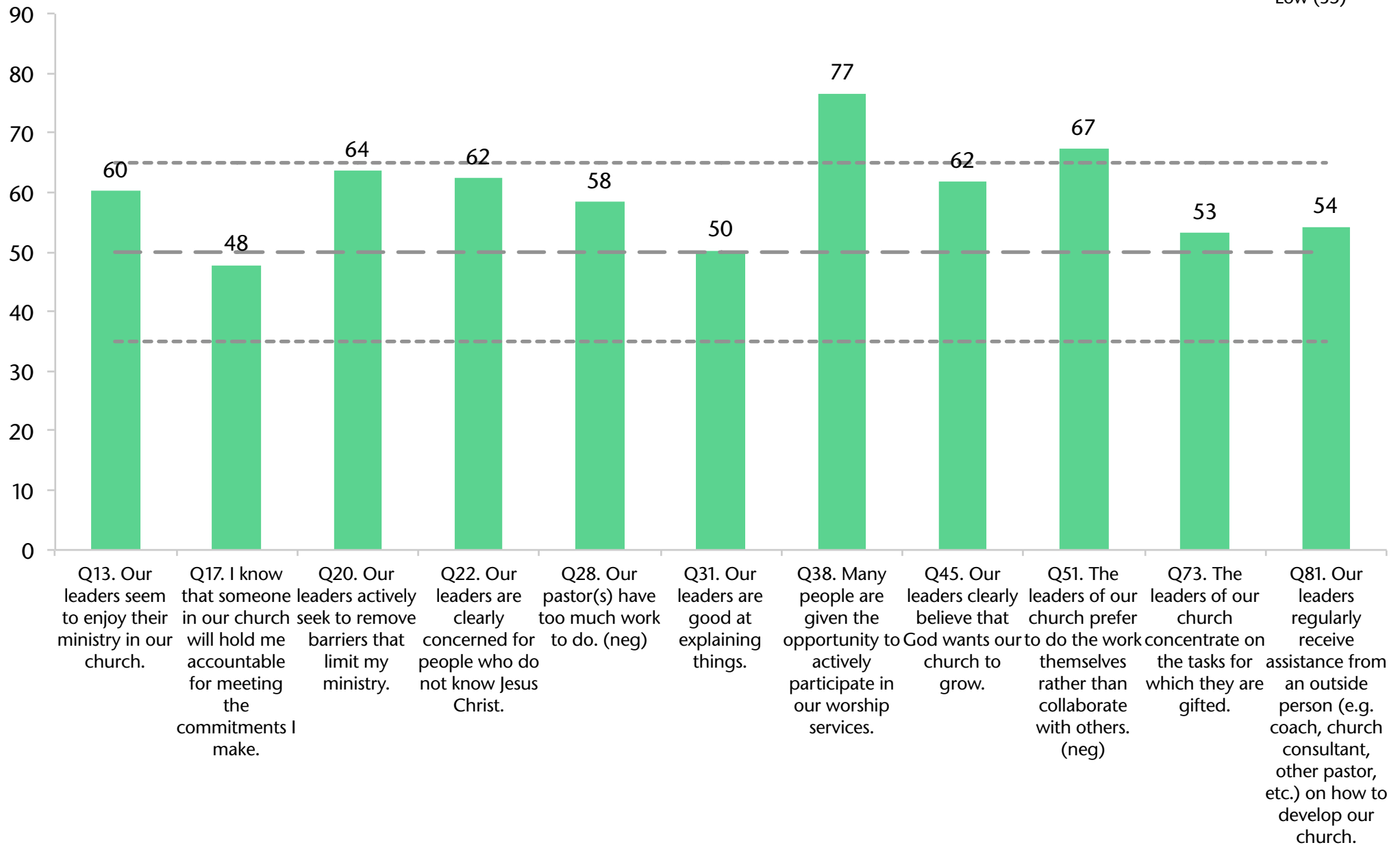
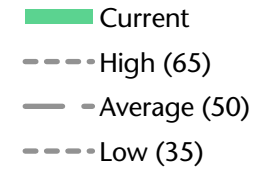
# Quality Characteristic Current Profile



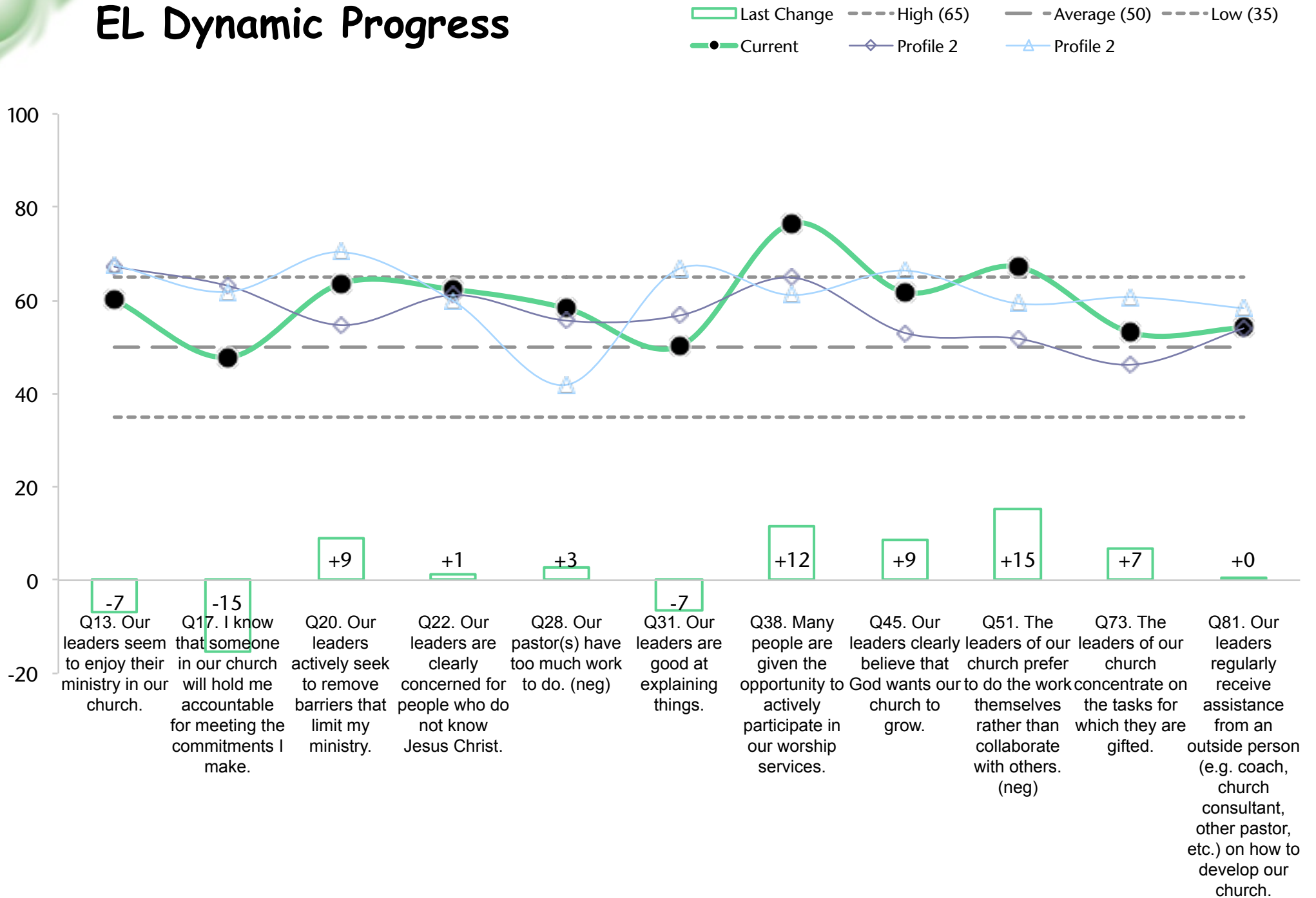
# Dynamic Progress



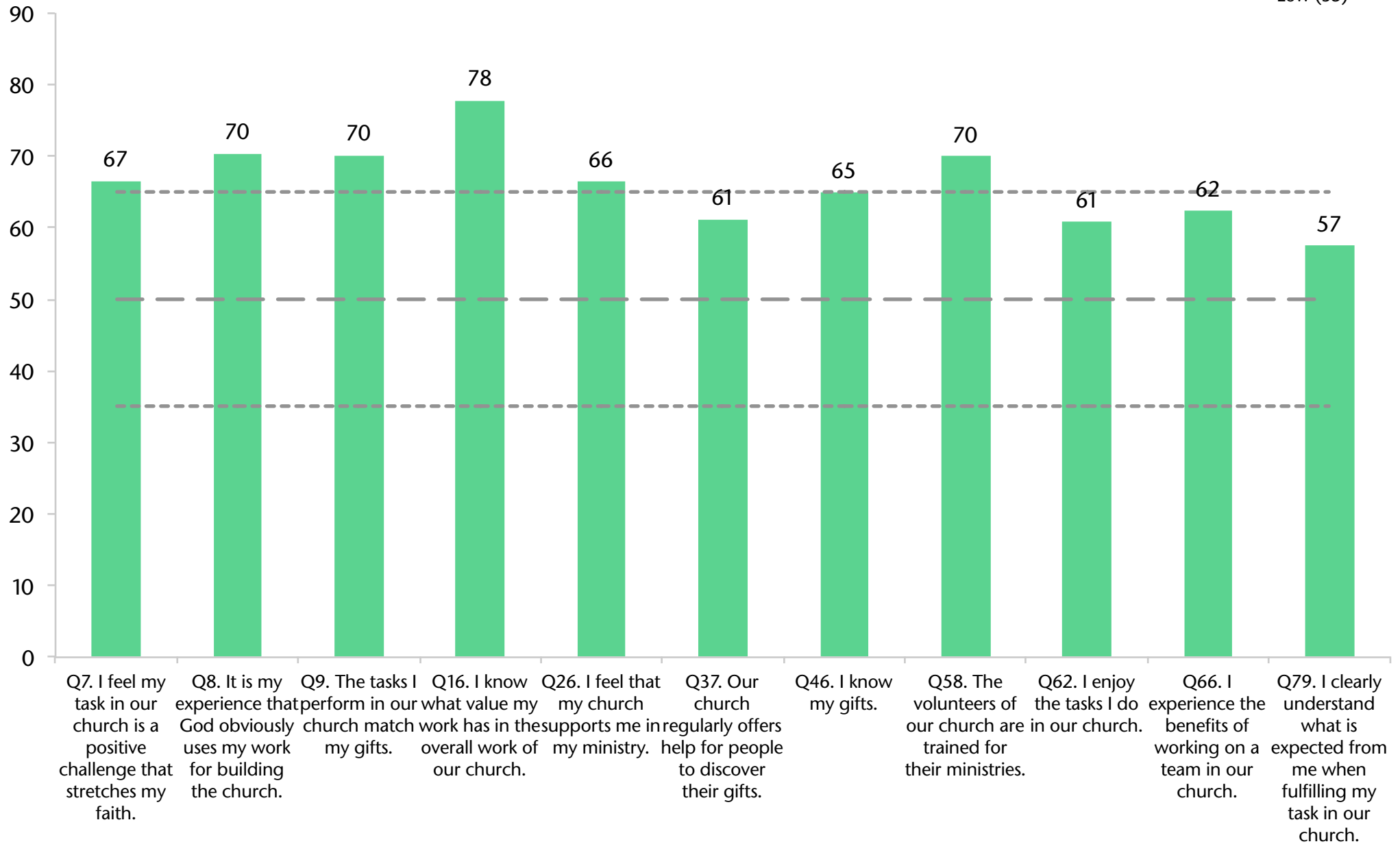
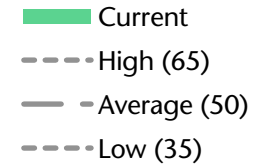
# Empowering Leadership Current Profile



# EL Dynamic Progress



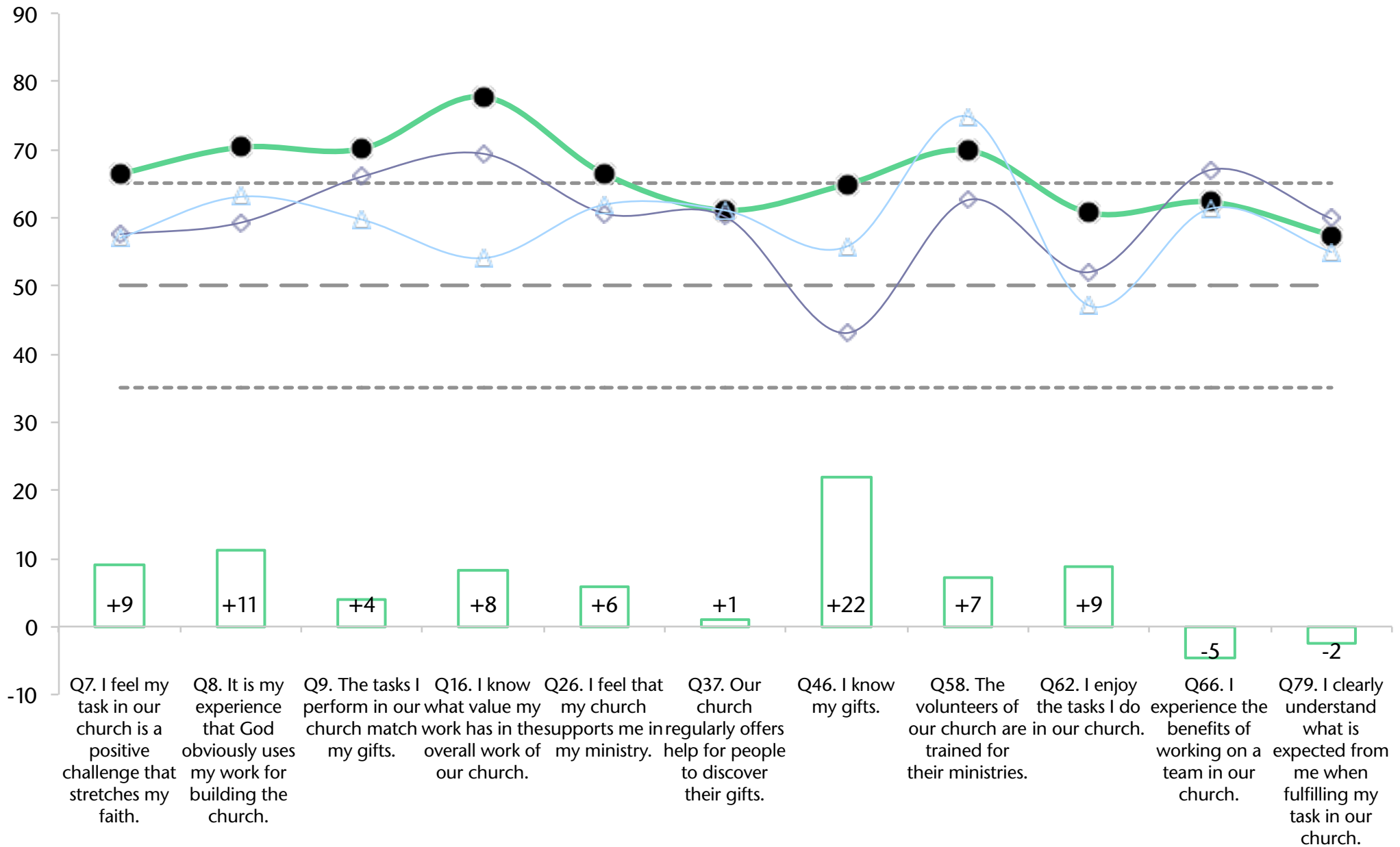
# Gift-based Ministry Current Profile



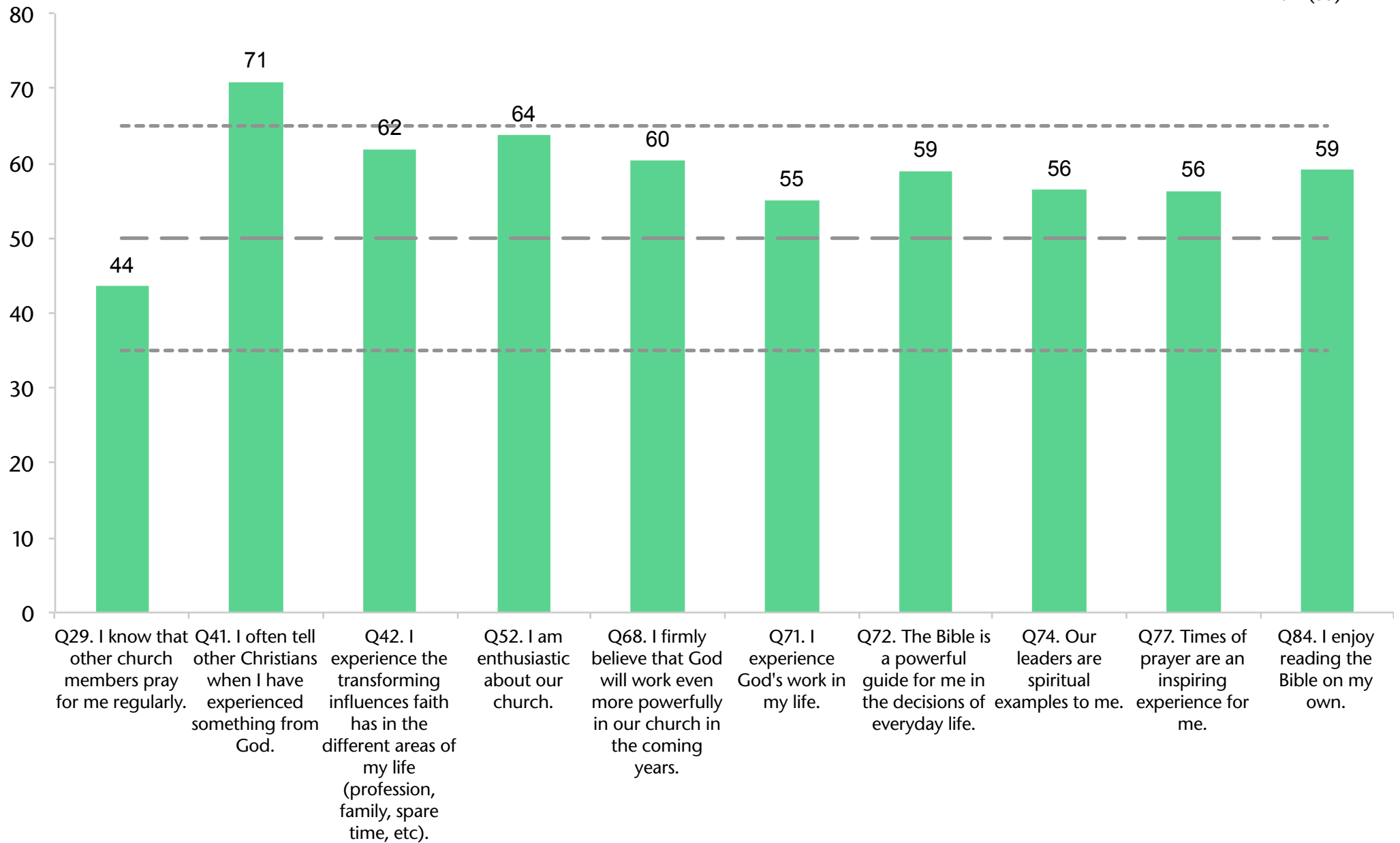
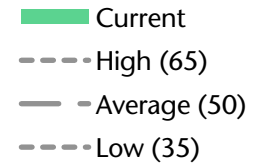


# GbM Dynamic Progress

Last Change   
 - - - High (65)   
 - - - Average (50)   
 - - - Low (35)  
● Current   
 ◆ Profile 2   
 ▲ Profile 2



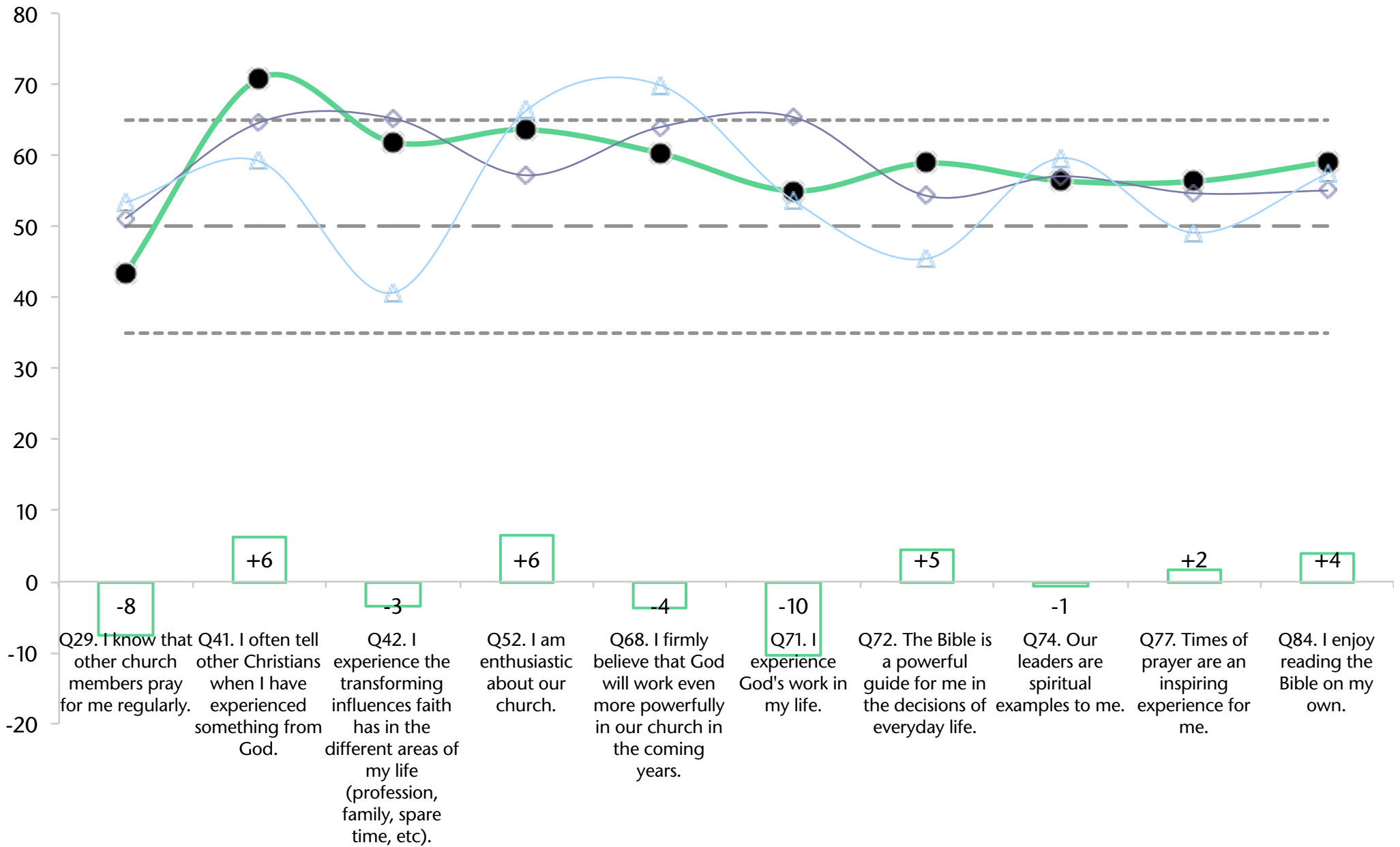
# Passionate Spirituality Current Profile



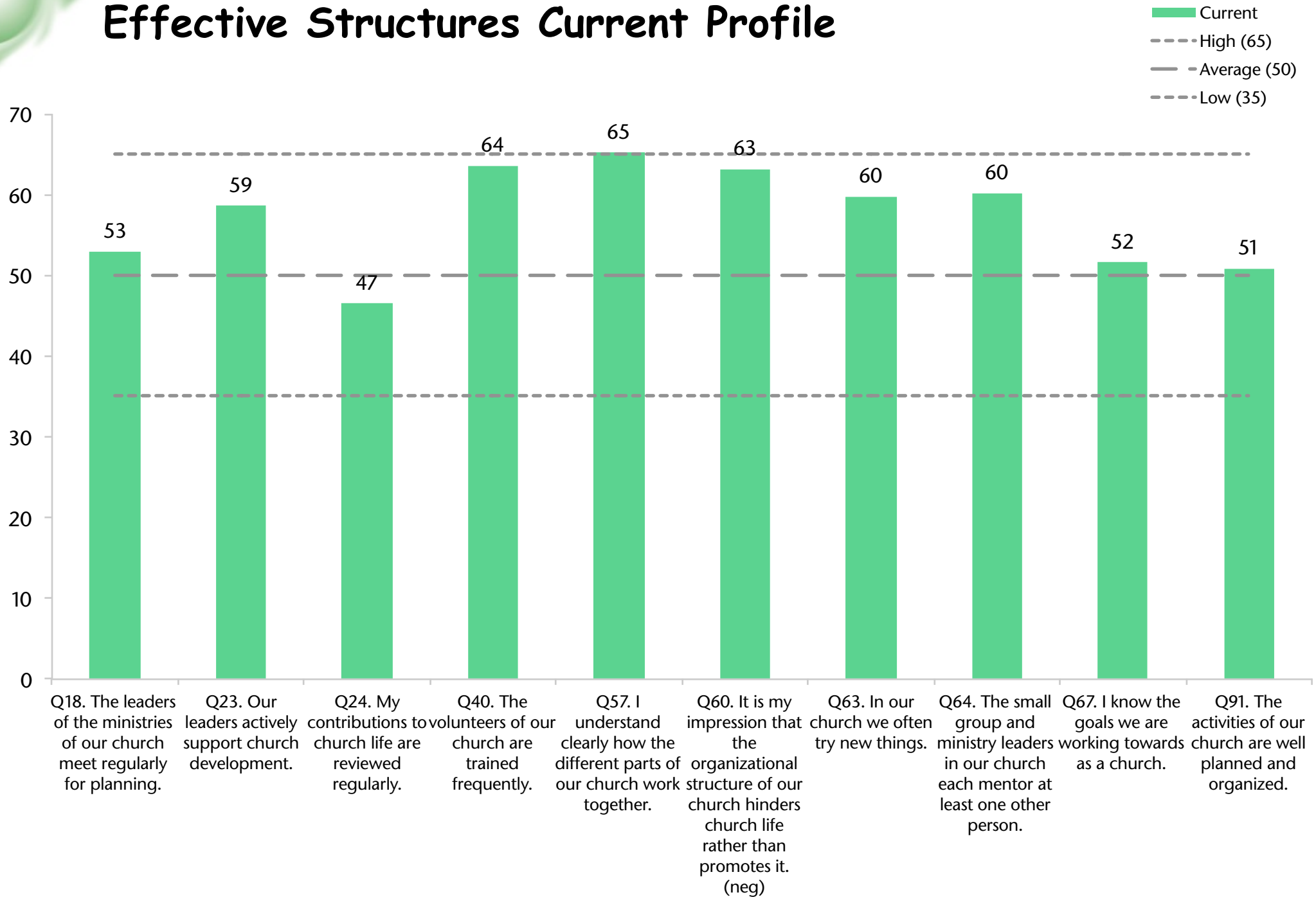
# PS Dynamic Progress

Last Change  
 - - - High (65)  
 - - - Average (50)  
 - - - Low (35)

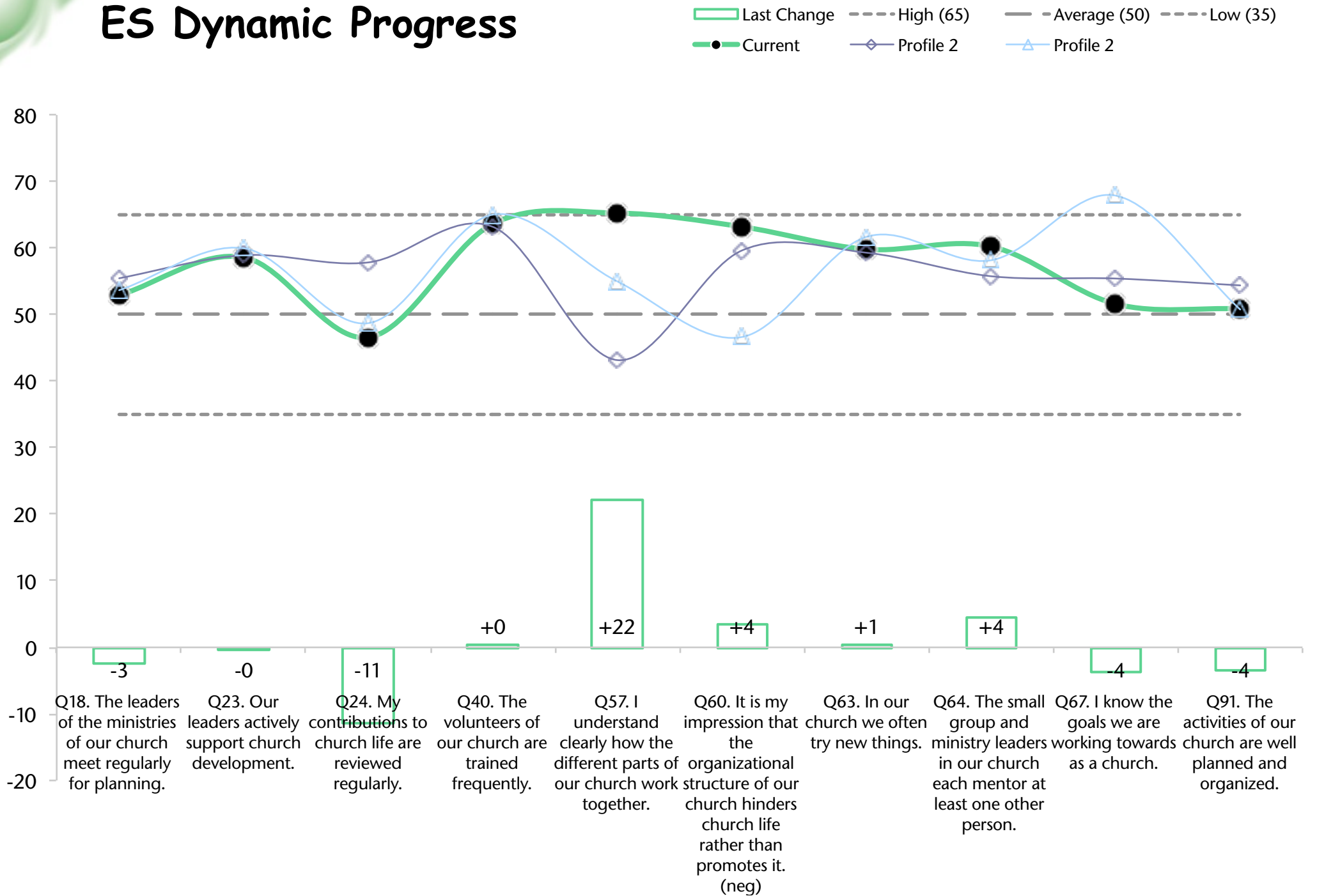
● Current  
 ◆ Profile 2  
 ▲ Profile 2



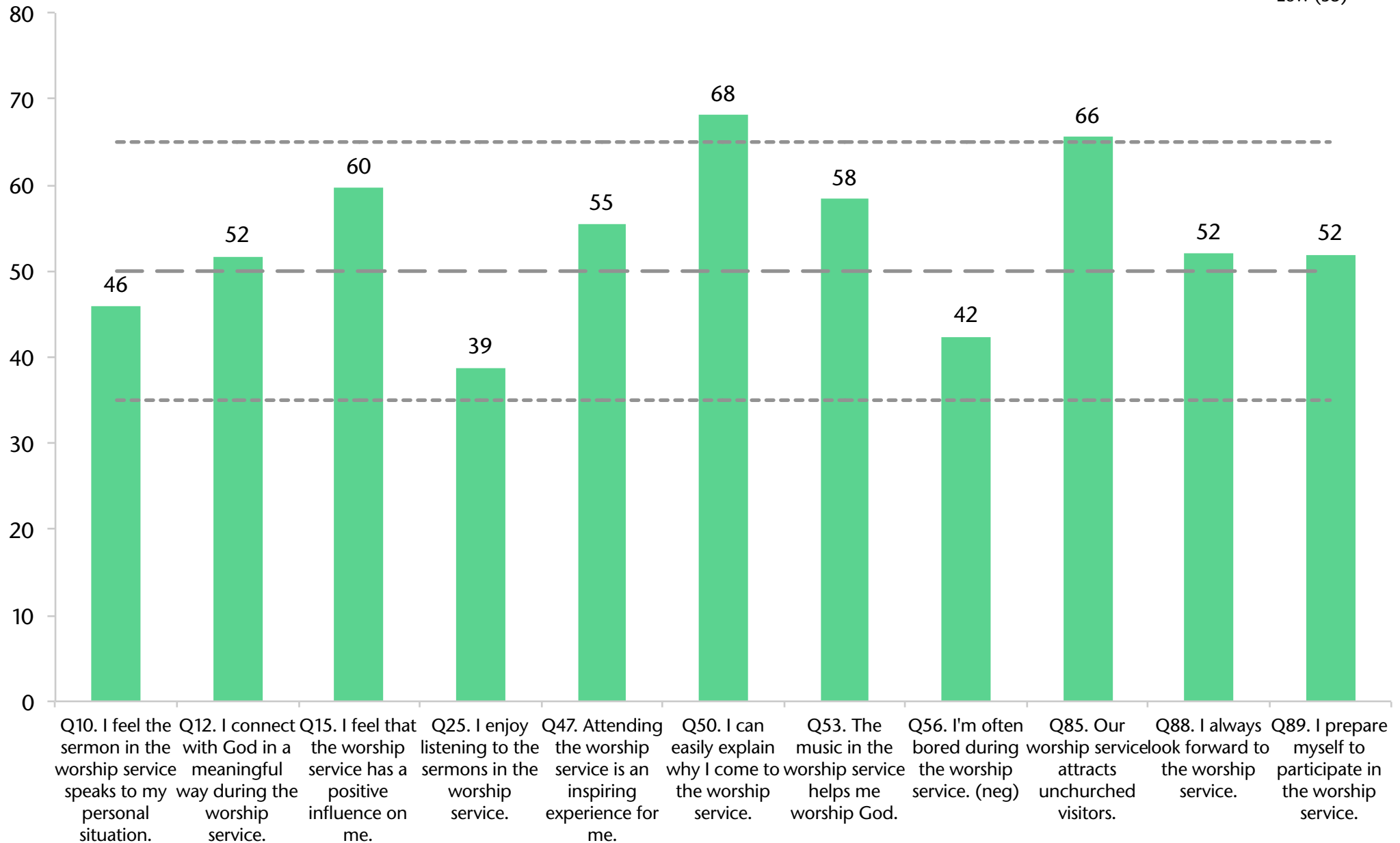
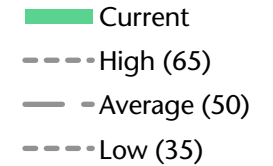
# Effective Structures Current Profile



# ES Dynamic Progress

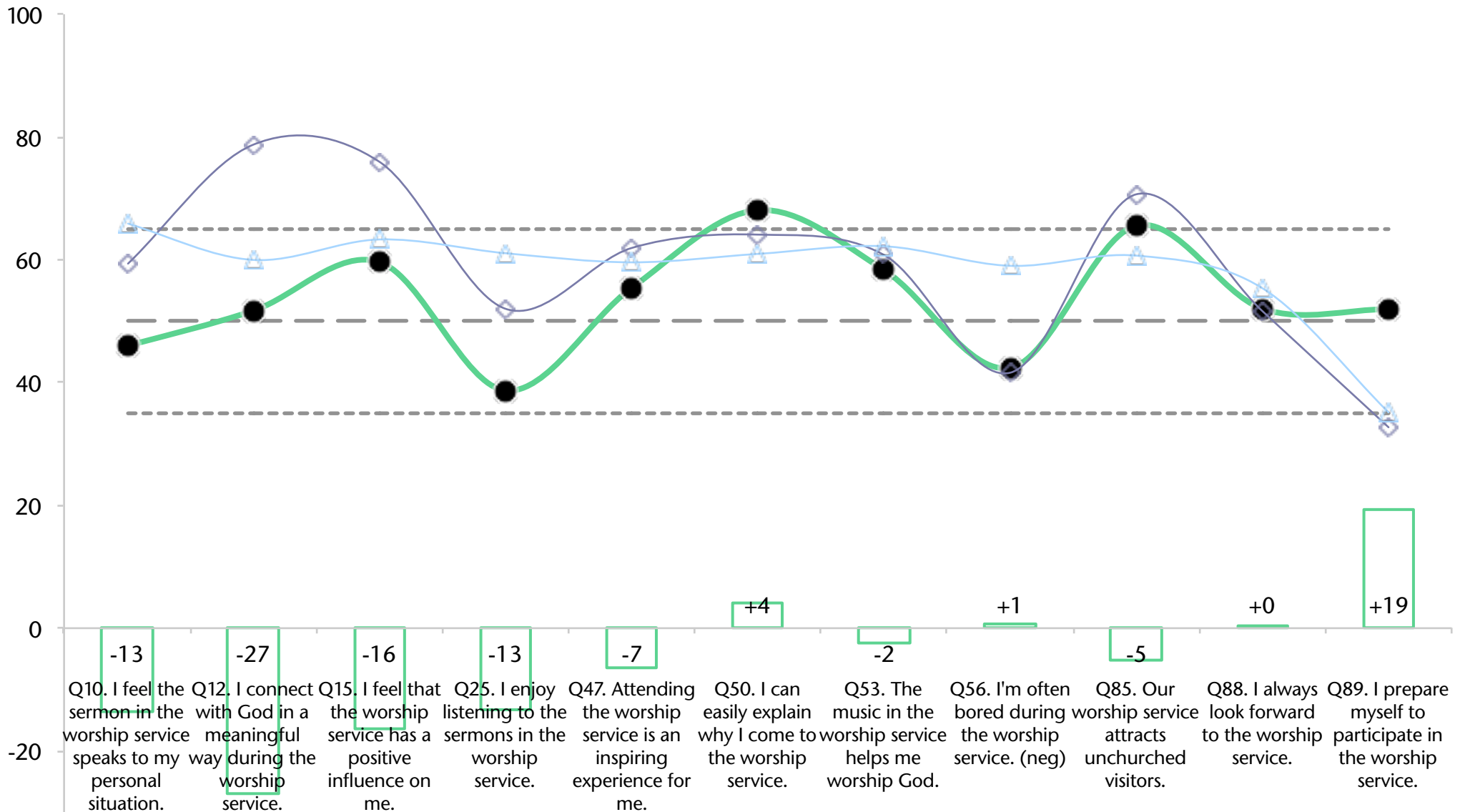


# Inspiring Worship Service Current Profile



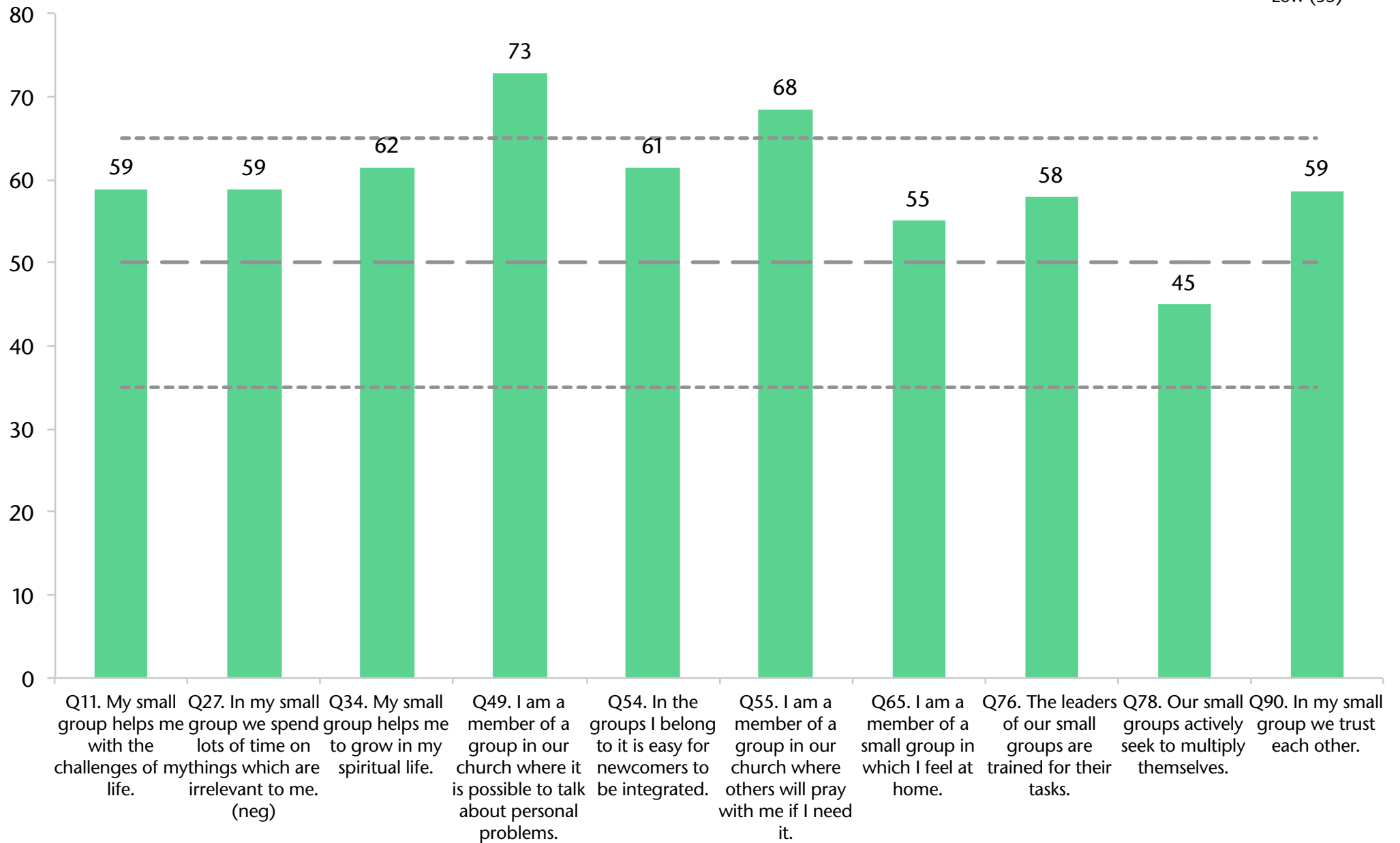
# IWS Dynamic Progress

  Last Change    - - - High (65)    - - - Average (50)    - - - Low (35)  
● Current    ◇ Profile 2    △ Profile 2



# Holistic Small Groups Current Profile

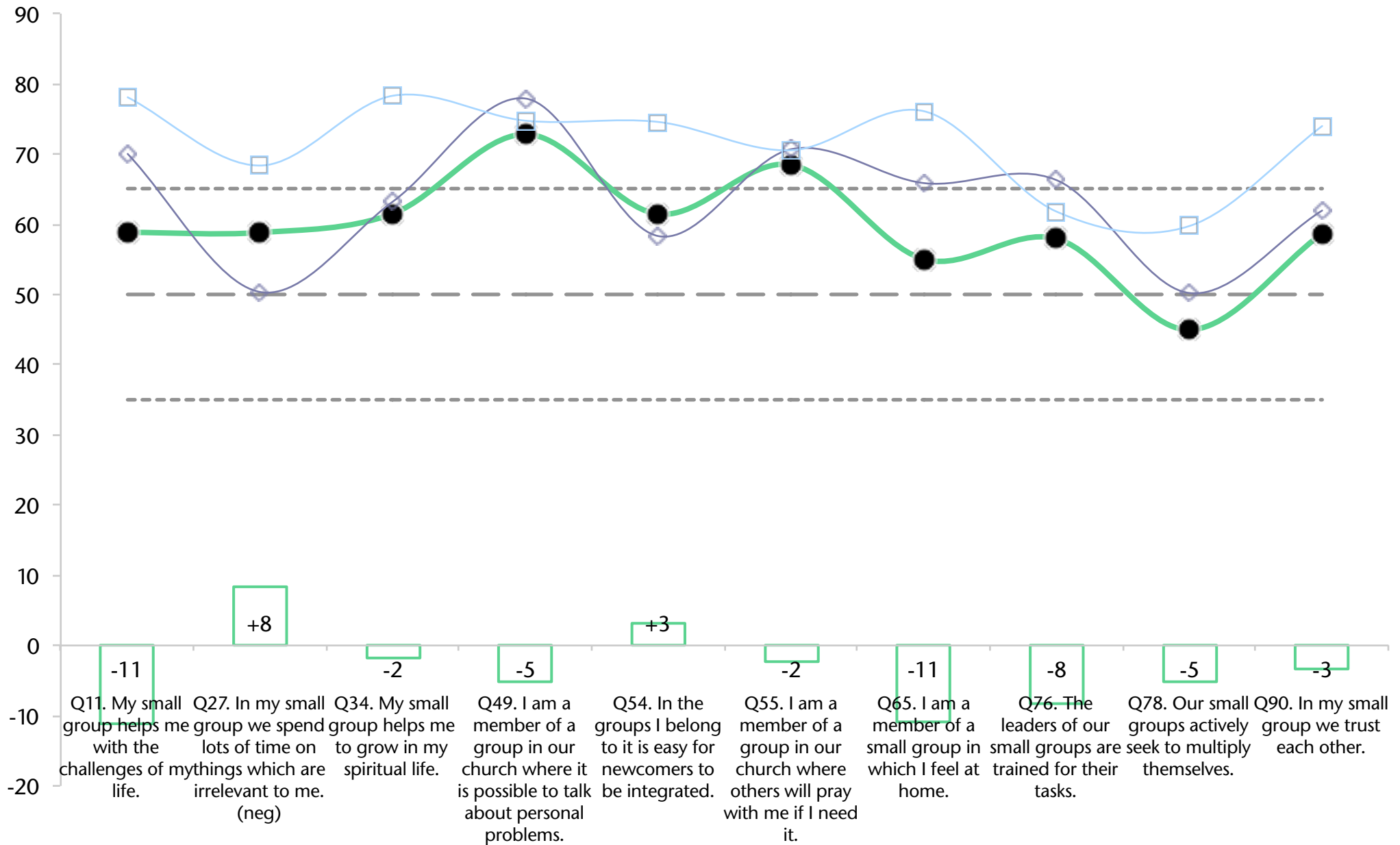
■ Current  
 High (65)  
 Average (50)  
 Low (35)



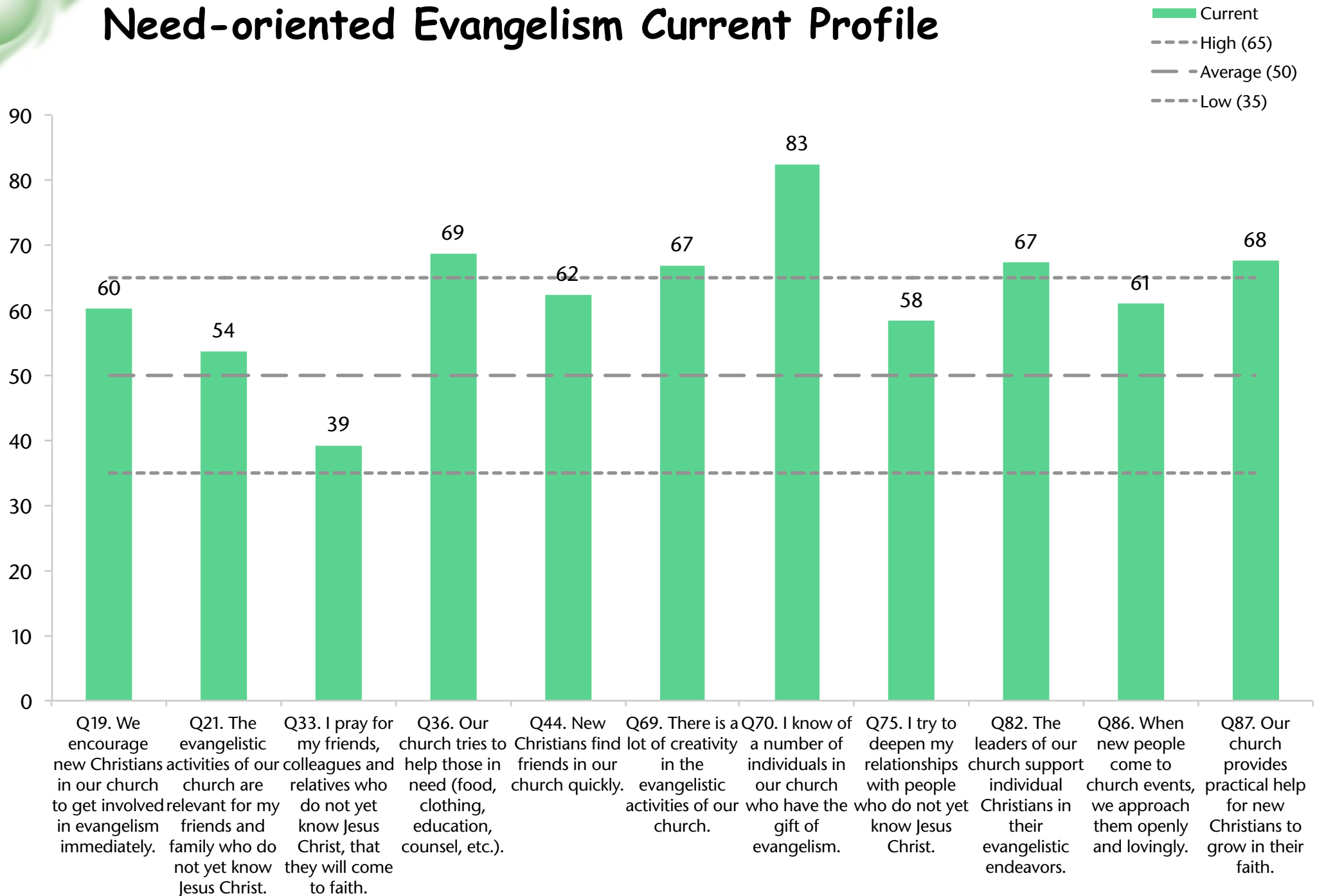


# HSG Dynamic Progress

Last Change   
 - - - - High (65)   
 - - - - Average (50)   
 - - - - Low (35)  
● Current   
 ◆ Profile 2   
 □ Profile 2



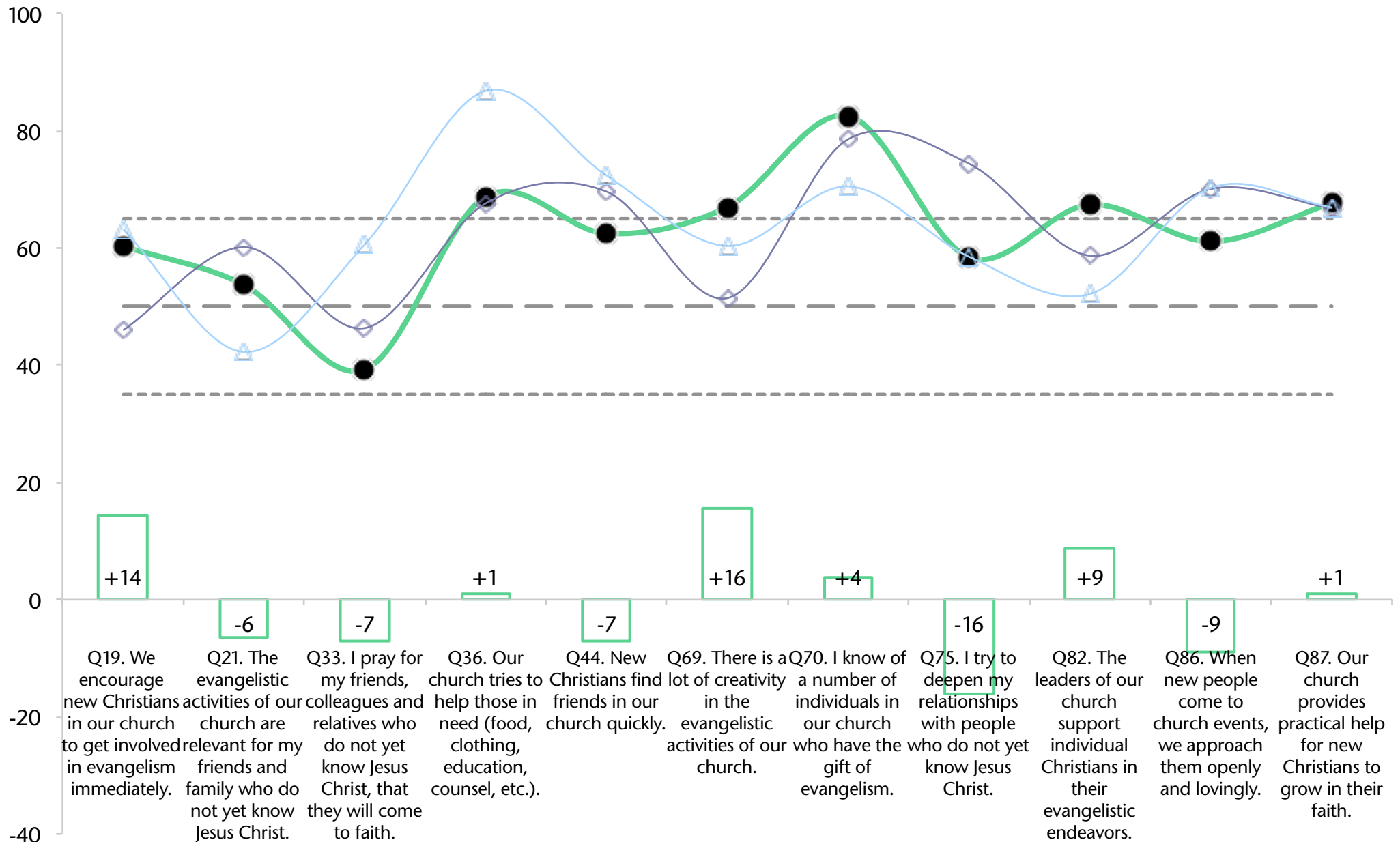
# Need-oriented Evangelism Current Profile



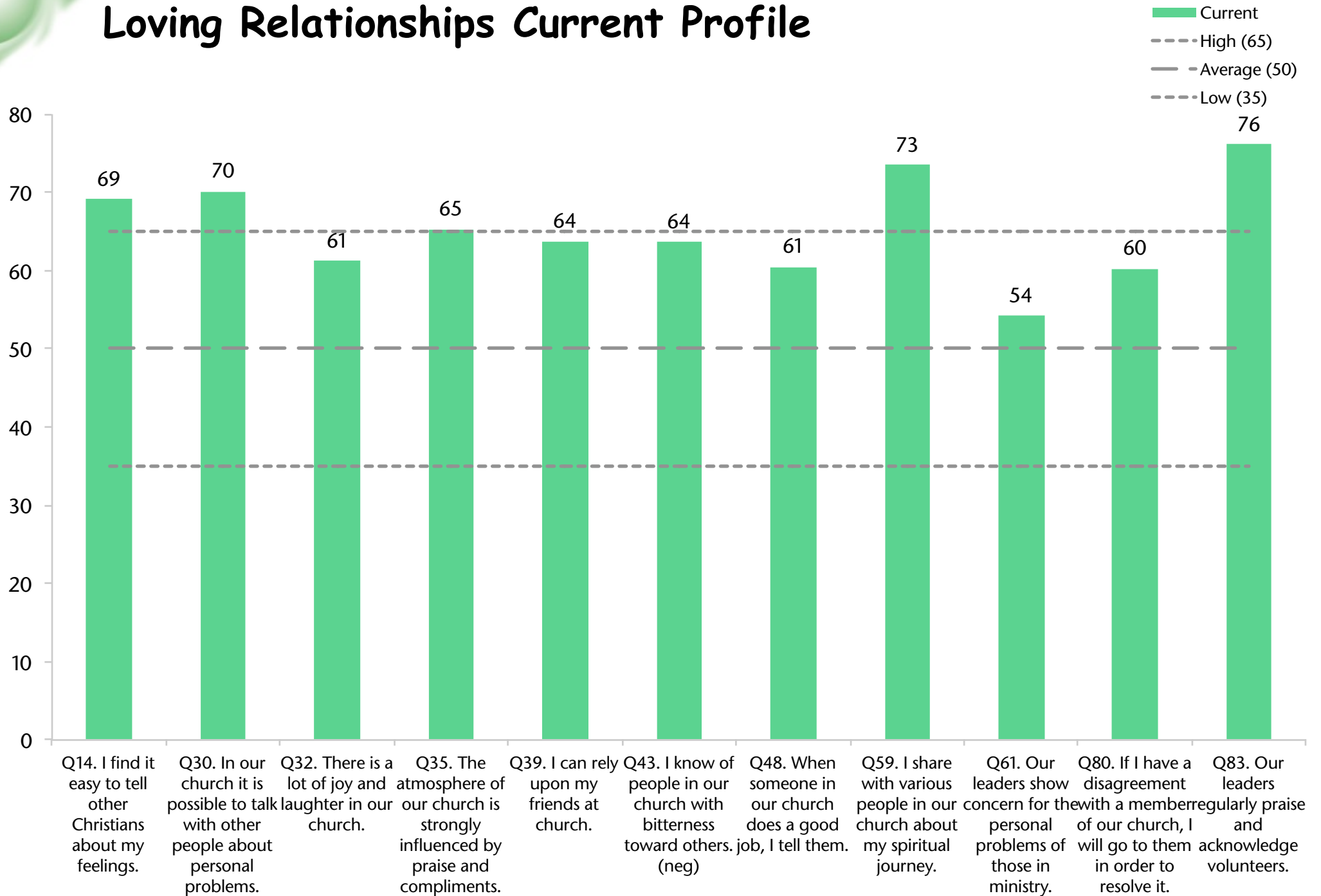
# NoE Dynamic Progress

Last Change  
 - - - High (65)  
 - - - Average (50)  
 - - - Low (35)

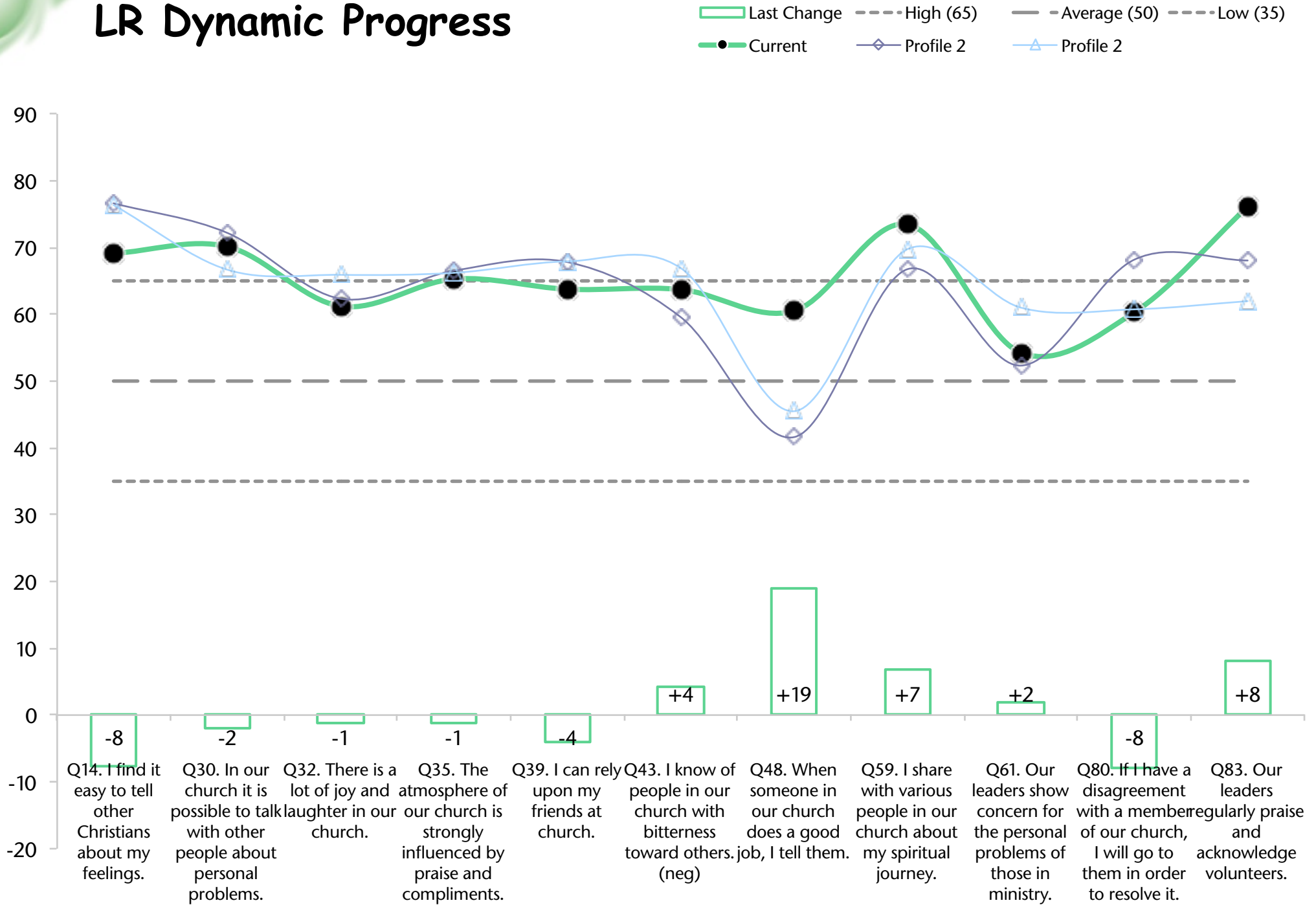
● Current  
 ◆ Profile 2  
 ▲ Profile 2



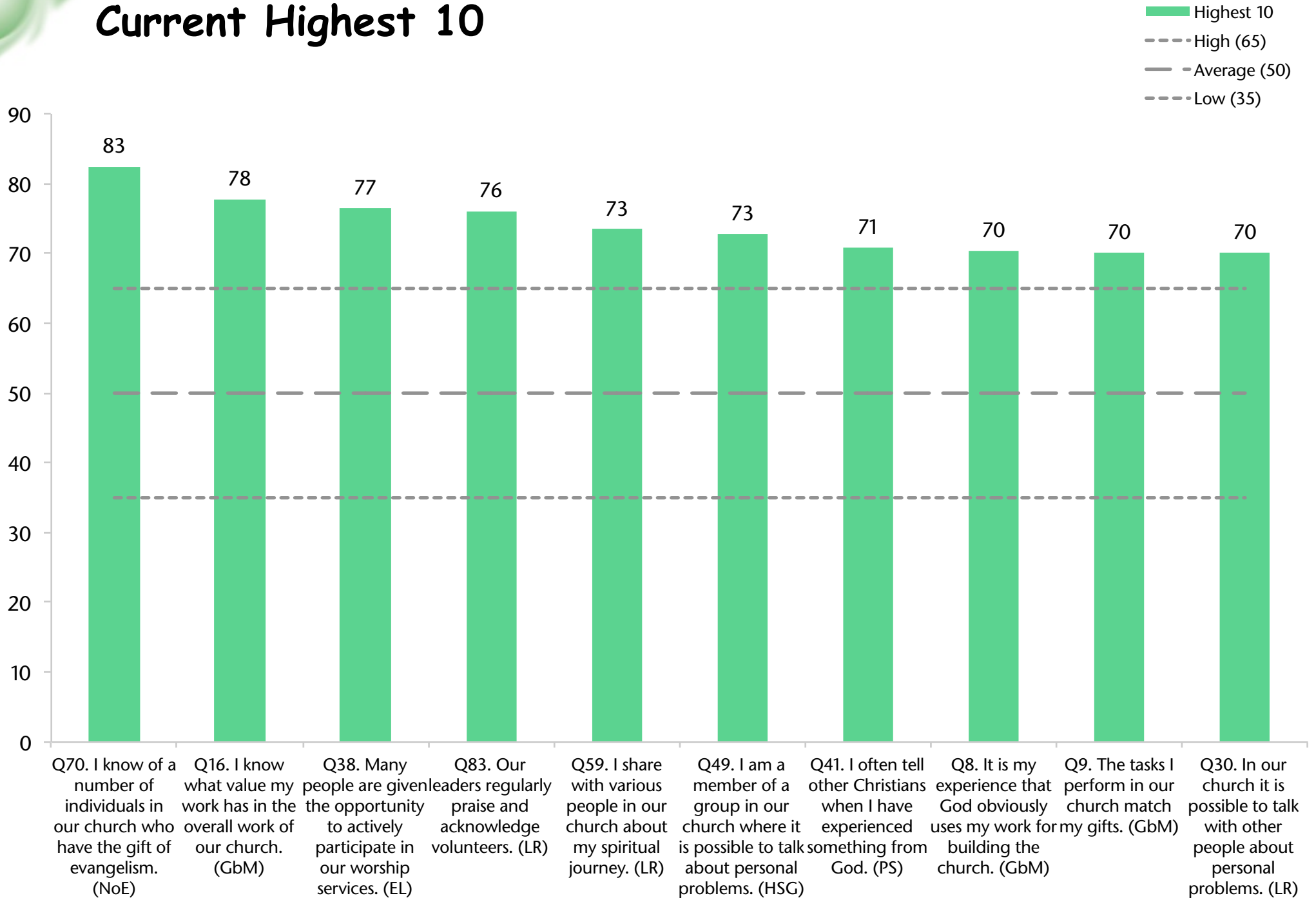
# Loving Relationships Current Profile



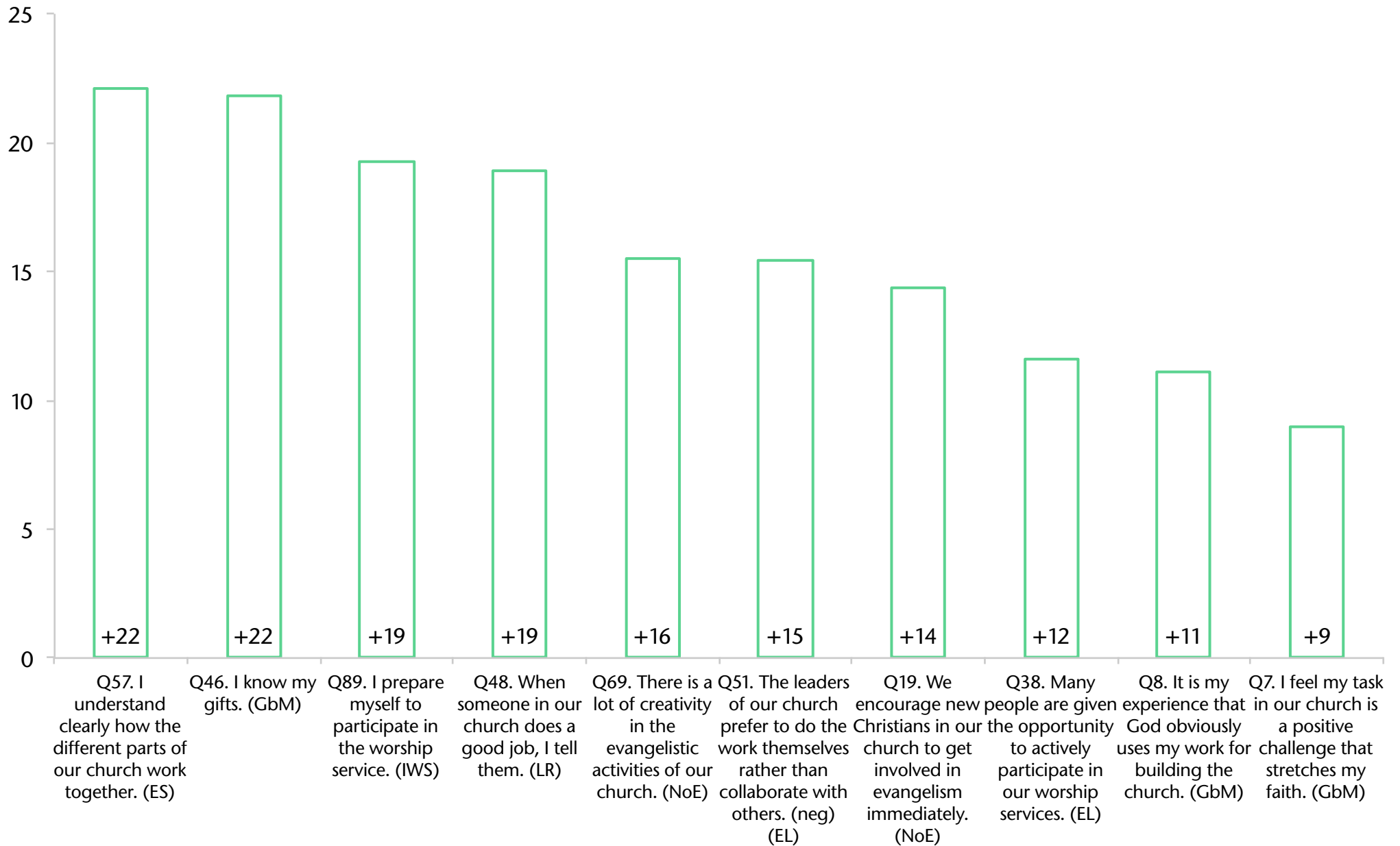
# LR Dynamic Progress



# Current Highest 10



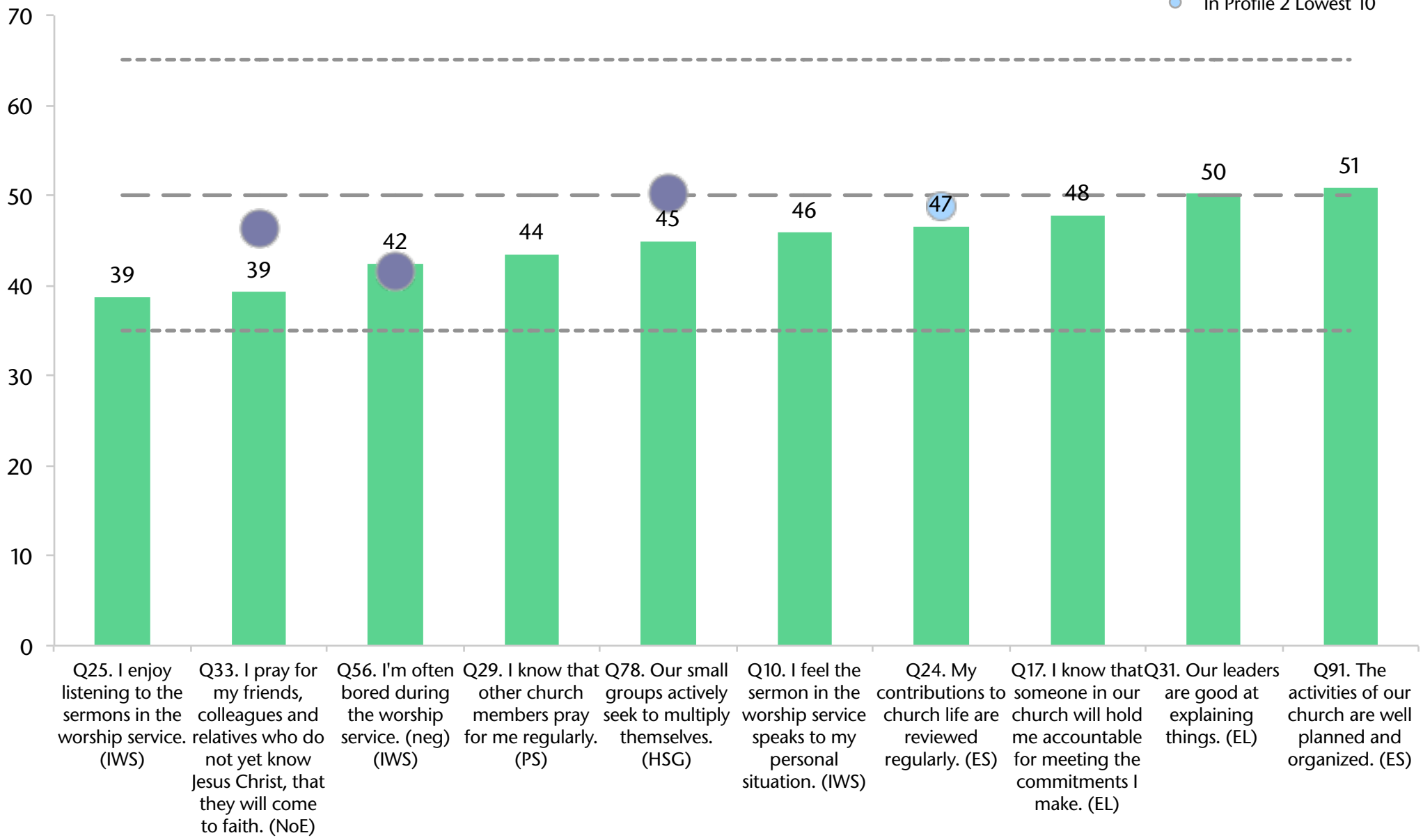
# Highest 10 changes from previous to current



# Current Lowest 10

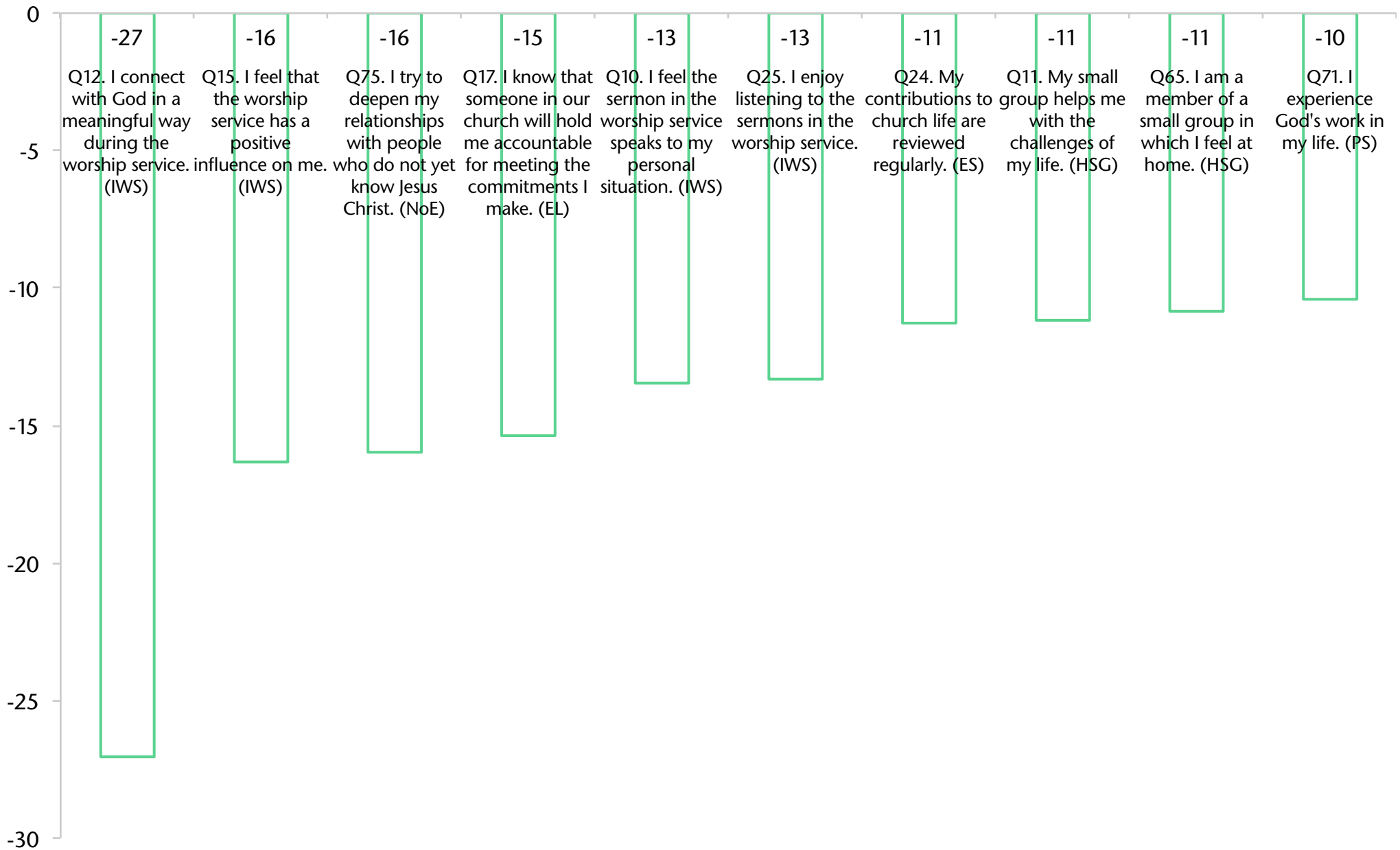


- Lowest 10
- - - High (65)
- - - Average (50)
- - - Low (35)
- In Profile 2 Lowest 10
- In Profile 2 Lowest 10

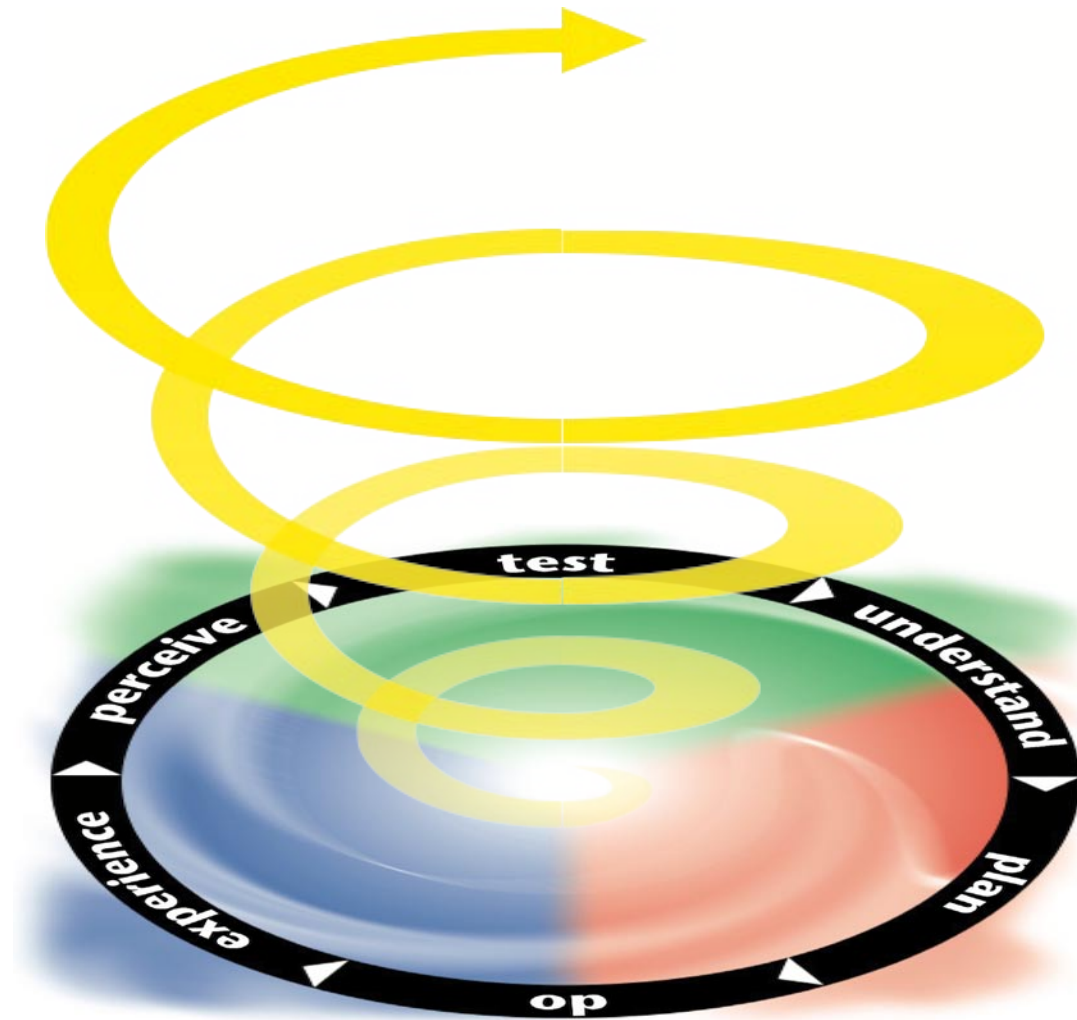
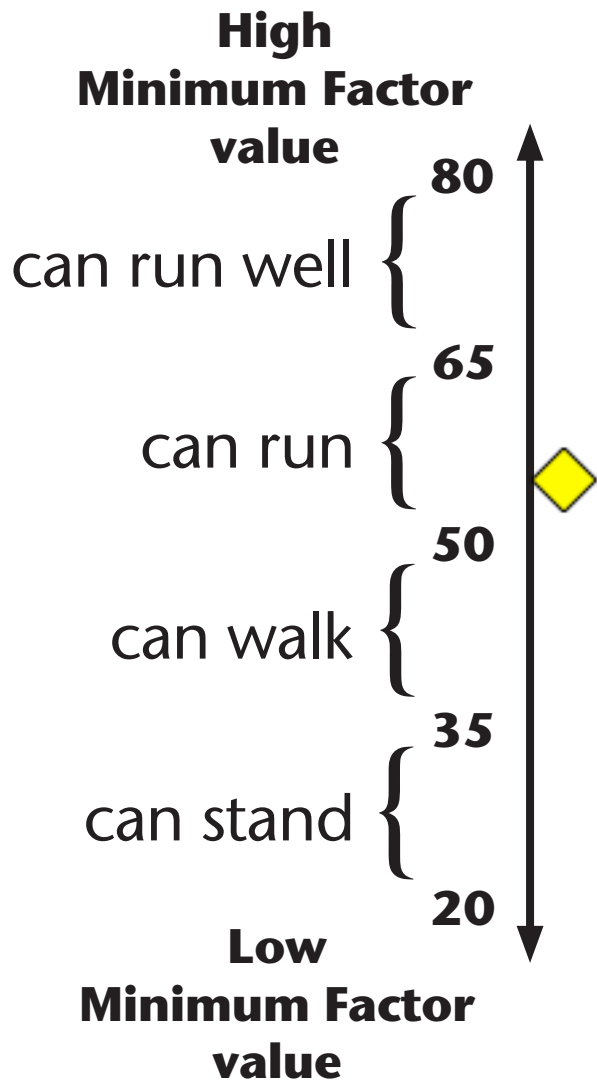




# Lowest 10 changes from previous to current



# Current Capacity



## Inspiring worship service

# My Cycle Starter Plan

## Our current challenges

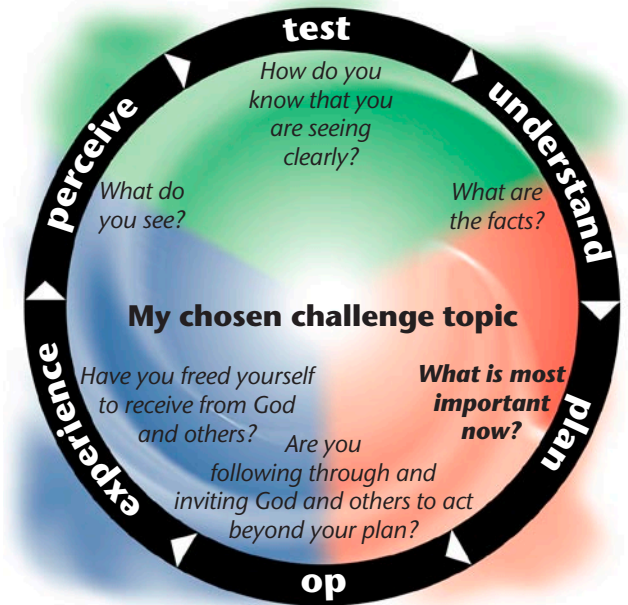
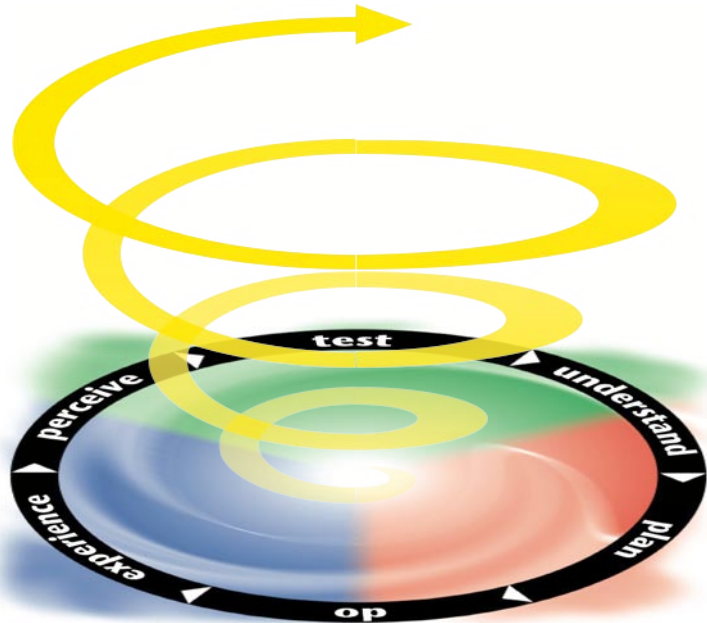
Faith

Inspiring worship service

prayer

accountability

relevance



**Beyond reasonable doubt,  
which of the above do you personally  
need to explore a little further?**

[www.ncdchurchsurvey.org/cycle-starters](http://www.ncdchurchsurvey.org/cycle-starters)